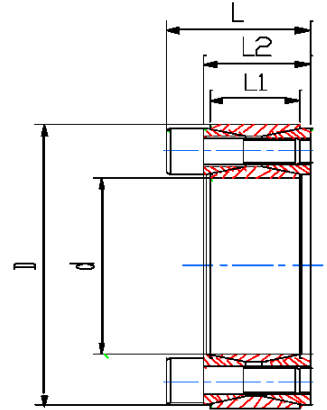


# Wellock 01

## Fitting Specification

SHAFT: h8

HUB: H8



Dimensions					Transmission		Contact Pressure		Locking Screws DIN 912-12.9		
					Axial Force	Torque	Shaft	Hub	Qty.	Size	Tightening Torque
$\phi d$	$\phi D$	L1	L2	L	Ft	Mt	P	P1			Ts
mm	mm	mm	mm	mm	KN	Nm	N/mm <sup>2</sup>	N/mm <sup>2</sup>	Nm		
19	47	18	20	26	26.8	260	220	93	8	M6x18	15
20	47	18	20	26	26.8	268	220	93	8	M6x18	15
22	47	18	20	26	26.8	283	207	96	8	M6x18	15
24	50	18	20	26	30.1	361	216	103	9	M6x18	15
25	50	18	20	26	30.1	376	206	103	9	M6x18	15
28	55	18	20	26	33.5	420	204	103	10	M6x18	15
30	55	18	20	26	33.5	450	190	103	10	M6x18	15
32	60	18	20	26	40.2	643	214	114	12	M6x18	15
35	60	18	20	26	40.2	703	196	114	12	M6x18	15
38	65	18	20	26	46.9	891	204	122	14	M6x18	15
40	65	18	20	26	46.9	938	200	123	14	M6x18	15
42	75	21	24	32	73.2	1,537	252	140	12	M8x22	38
45	75	21	24	32	73.2	1,647	236	141	12	M8x22	38
48	80	21	24	32	73.2	1,756	221	132	12	M8x22	38
50	80	21	24	32	73.2	1,830	212	132	12	M8x22	38
55	85	21	24	32	85.4	2,348	225	145	14	M8x22	38
60	90	21	24	32	85.4	2,560	206	137	14	M8x22	38
65	95	21	24	32	97.6	3,170	217	148	16	M8x22	38
70	110	25	28	38	134.4	4,700	231	147	14	M10x25	75
75	115	25	28	38	134.4	5,000	216	140	14	M10x25	75
80	120	25	28	38	134.4	5,300	202	134	14	M10x25	75
85	125	25	28	38	153.6	6,500	218	148	16	M10x25	75
90	130	25	28	38	153.6	6,900	205	141	16	M10x25	75
95	135	25	28	38	172.8	8,200	219	154	18	M10x25	75
100	145	29	33	45	197.4	9,870	219	151	14	M12x30	130
110	155	29	33	45	187.4	10,800	200	141	14	M12x30	130
120	165	29	33	45	225.6	13,500	209	152	16	M12x30	130
130	180	34	40	50	282	18,300	184	132	20	M12x35	130
140	190	34	40	50	310.1	21,700	188	138	22	M12x35	130
150	200	34	40	50	338.4	25,300	220	165	24	M12x35	130
160	210	34	40	50	366.6	29,300	195	148	26	M12x35	130
170	225	40	44	58	389	33,000	174	131	22	M14x40	207
180	235	40	44	58	424	38,000	179	137	24	M14x40	207
190	250	48	52	66	495	47,000	164	124	28	M14x45	207
200	260	48	52	66	531	53,000	167	128	30	M14x45	207
210	275	50	56	74	599	62,890	151	151	24	M16x50	295
220	285	50	56	74	620	68,000	150	150	26	M16x50	295
240	305	50	56	74	715	85,500	160	160	30	M16x50	295
250	315	50	56	74	768	96,000	162	162	32	M16x50	295
260	325	50	56	74	800	104,000	165	165	34	M16x50	295
280	355	60	66	86.5	915	128,000	145	145	32	M18x60	405
300	375	60	66	86.5	1,020	153,000	150	150	36	M18x60	405
320	405	72	78	100.5	1,310	210,000	150	150	36	M20x70	580
340	425	72	78	100.5	1,310	224,000	145	145	36	M20x70	580
360	455	84	90	116	1,630	294,000	145	145	36	M22x80	780
380	475	84	90	116	1,620	308,000	135	135	36	M22x80	780
400	495	84	90	116	1,610	322,000	130	130	36	M22x80	780